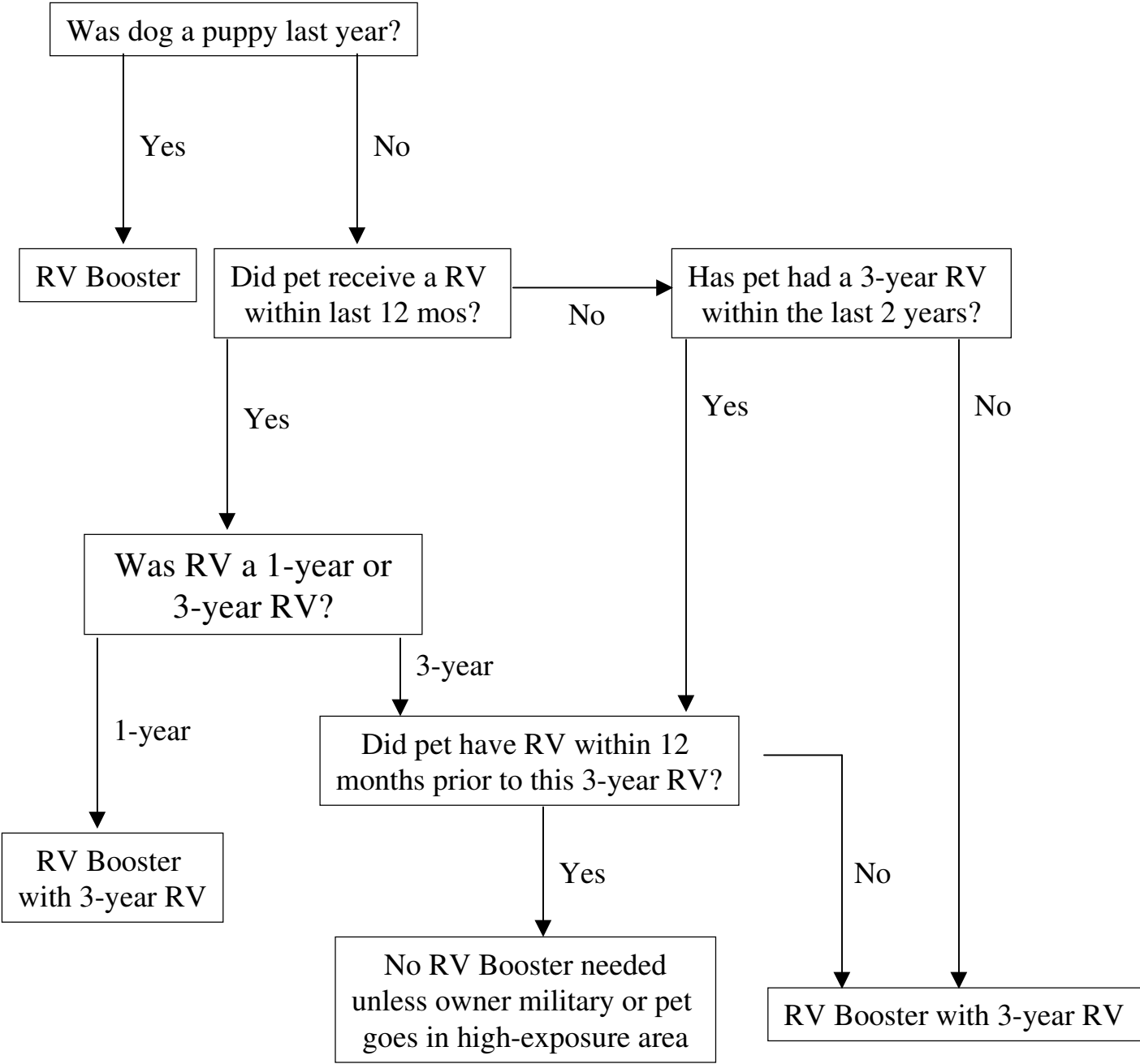


# Rabies Flow Chart



**Note:** If this is the first time an adult pet is receiving a 3-year RV, had a 1-year RV in the past, or never had RV before, then the pet will need a RV booster next year with a 3-year RV. A pet must have two RV within 12 months with the last RV being a 3-year RV before the pet can go 3 years until their next RV unless owner military or pet goes in high-exposure areas.